

zenon
Solid Surface

Tamesis Freestanding

Tamesis Freestanding TL

LAVABO DE PIE
FREESTANDING WASHBASIN
VASQUE SUR PIED
LAVABO MONOLITICI

TAMESIS FREESTANDING SOFT



TAMESIS FREESTANDING



TAMESIS FREESTANDING TL

INFORMACIÓN TÉCNICA

TECHNICAL INFORMATION | INFORMATION TECHNIQUE | INFORMAZIONE TECNICA

Acabados |

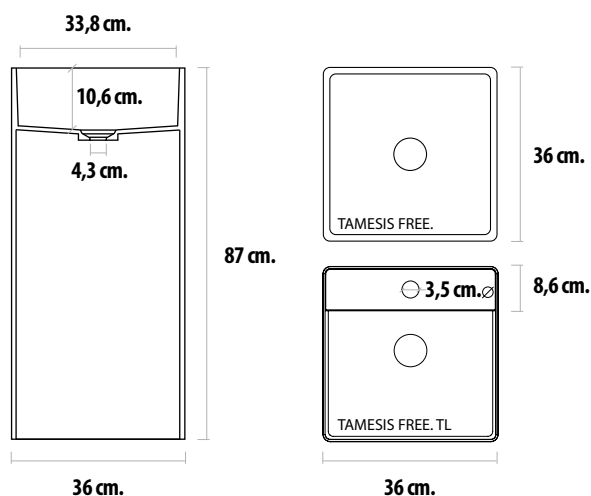
Finishing | Finition | Finitura: SOFT

Color |

Color | Couleur | Colori: GLACIAR WHITE

Medidas |

Measures | Mesures | Misure



OPCIÓN |

OPTION | OPTION | OPZIONE



+ info pag. 88

Válvula Click - Clack | 4 Acabados
Click - Clack Valve | 4 Finishes
Bonde Click - Clack | 4 Finition
Scarico Click-Clack | 4 Finitura

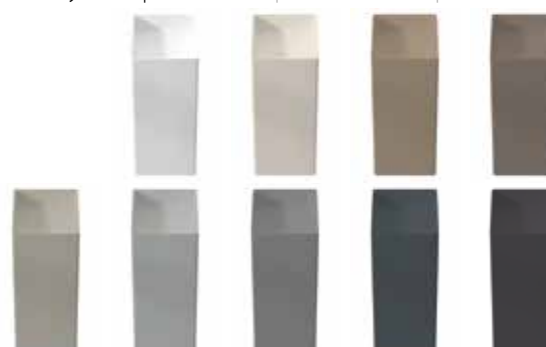


M Colores metálicos
Metal colours
Couleurs Métalliques
Colori Metallizzati

Sólo exterior | External only
Extérieur uniquement | Solo esterno

Colores estándar

Standard colours | Couleurs standard | Colori standard
Interior y exterior | Inside or outside | Intérieur et extérieur | Interno ed esterno.



INFORMACIÓN TÉCNICA

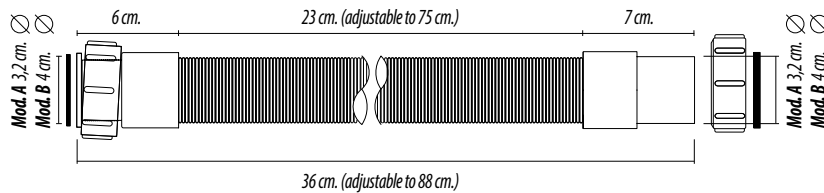
TECHNICAL INFORMATION | INFORMATION TECHNIQUE | INFORMAZIONE TECNICHE

FREESTANDING

LAVABO DE PIE | FREESTANDING WASHBASIN | VASQUE SUR PIED | LAVABI MONOLITICI

SIFÓN VERTICAL EXTENSIBLE | EXTENDABLE SIPHON | SIPHON EXTENSIBLE | SIFONE ESTENSIBILE

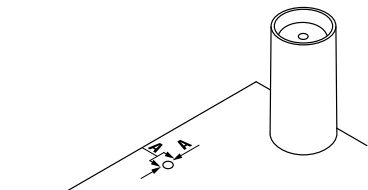
Sifón extensible máxima flexibilidad de 36 cm a 88 cm con tuerca y terminal PVC. Acabado: Blanco / Encolable
 Extendable siphon maximum flexibility from 36 cm to 88 cm with nut and PVC end. Finish: White / Gluable
 Siphon extensible, flexibilité maximale de 36 cm à 88 cm avec écrou et embout PVC. Finition : Blanc / Collable
 Sifone estensibile massima flessibilità da 36 cm a 88 cm con dado ed estremità in PVC. Finitura: Bianco / Incollabile



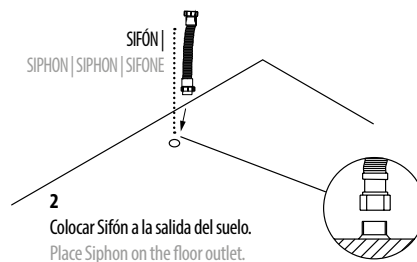
SIFÓN VERTICAL | VERTICAL SIPHON | SIPHON VERTICAL | SIFONE VERTICALE



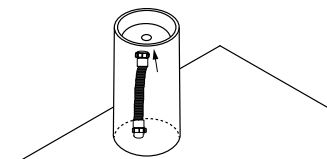
INSTALACIÓN | PREPARATION | INSTALLATION | INSTALLAZIONE



1
A Medir distancia y marcar la colocación.
 A Measure distance and mark placement.
 A Mesurer la distance et l'emplacement des marques.
 A Misurazione per il punto di posizionamento.

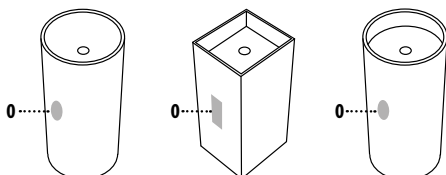


2
Colocar Sifón a la salida del suelo.
 Place Siphon on the floor outlet.
 Placez Siphon sur la par terre.
 Posizionare il Sifone sull'uscita del pavimento.



3
Extender sifón y colocar en el desagüe del lavabo de pie.
 Spread out the siphon and place it in the drain of the sink.
 Répartissez le siphon et placez-le dans le drain de l'évier.
 Stendere il sifone e riporlo nello scarico del lavandino.

DESAGÜE HORIZONTAL | HORIZONTAL DRAIN | ÉVACUATION HORIZONTALE | SCARICO ORIZZONTALE



0 Esta disponible la opción del cajado posterior para el desagüe horizontal.
 0 The option of a rear recess for horizontal drainage is available.
 0 L'option d'ouverture arrière pour le drainage horizontal est disponible.
 0 È disponibile l'impianto a parete.